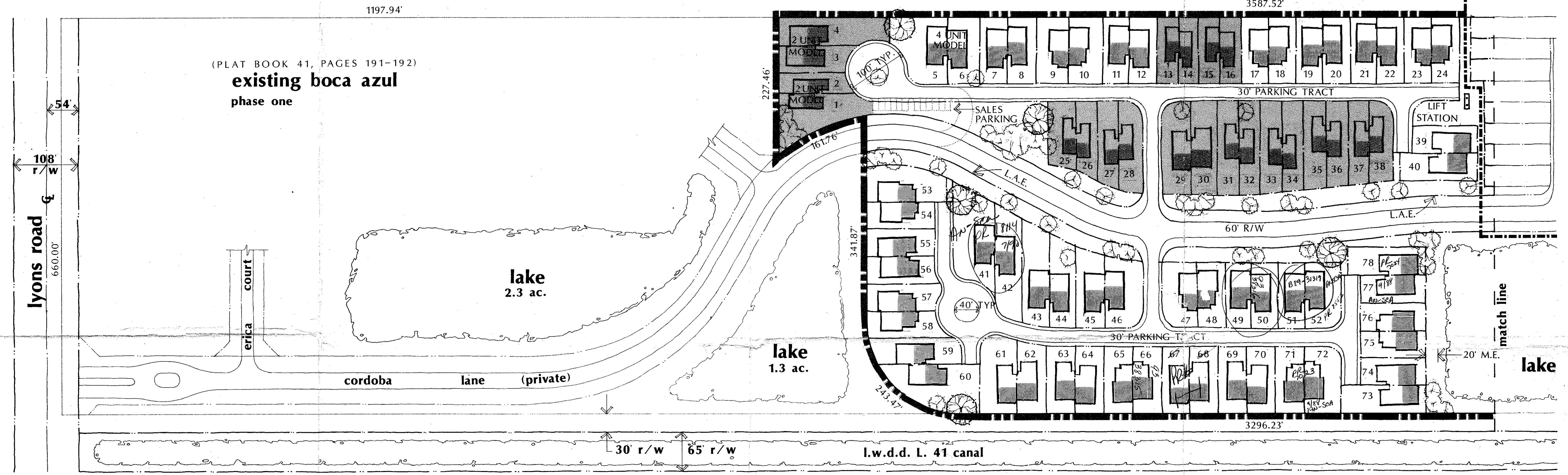


Reference only
 MASTER PLAN APPROVAL BY THE SUBDIVISION REVIEW COMMITTEE DATE: 10-7-1987
 REPRESENTATIVES:
 COUNTY ENGINEER: *Alan P. ...*
 COUNTY ENVIRONMENTAL CONTROL: *Orma ...*
 PLANNING: *...*
 ZONING: *...*
 TRAFFIC: *...*
 WATER AND SEWER: *...*
 SURVEY: *...*
 HEALTH UNIT: *...*

(PLAT BOOK 33, PAGES 154-157)
long lake estates

Tech: Log PR #'s phase two phase three
 3587.52'



total (including phase 1)
 site data
 72.68 acres
 257 lots/tracts
 * 335 dwelling units max. (244 previously approved)
 4.6 d.u./ac. max. density
 lakes 9.1 acres

this submittal
 site data
 52.85 acres
 234 lots/tracts townhouses/condo
 291 dwelling units max.
 5.5 d.u./ac. max. density
 lakes 5.5 acres

phase one site data
 19.83 acres
 23 lots
 44 dwelling units (44 exist. units)
 2.2 d.u./ac. max. density
 lakes 3.6 acres

whisper walk p.u.d.
 (PLAT BOOK 43, PAGES 189-191)

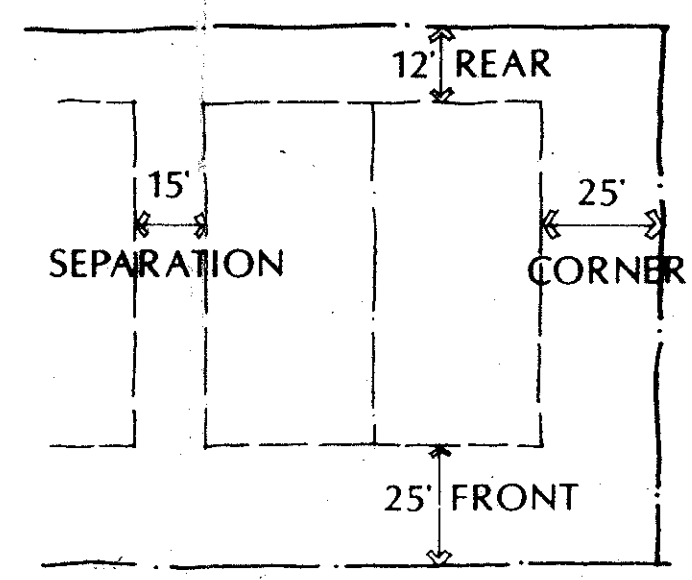
phase two site data
 18.15 acres
 78 lots/tracts
 134 dwelling units max.
 7.4 d.u./ac. max. density
 lake 2.0 acres

sec. 5 twp. 47 rng. 42
 zoning rm-residential multiple family
 (se-special exception excavation
 zoning petition no. 80-115 kay-ess realty)
 aerial page 369 south volume
 zoning quad sheet 53

* BASED ON TRAFFIC PERFORMANCE STANDARDS DUE TO CURRENT STATUS OF YAMATO ROAD.

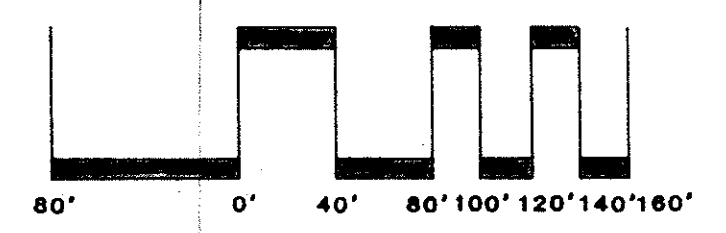
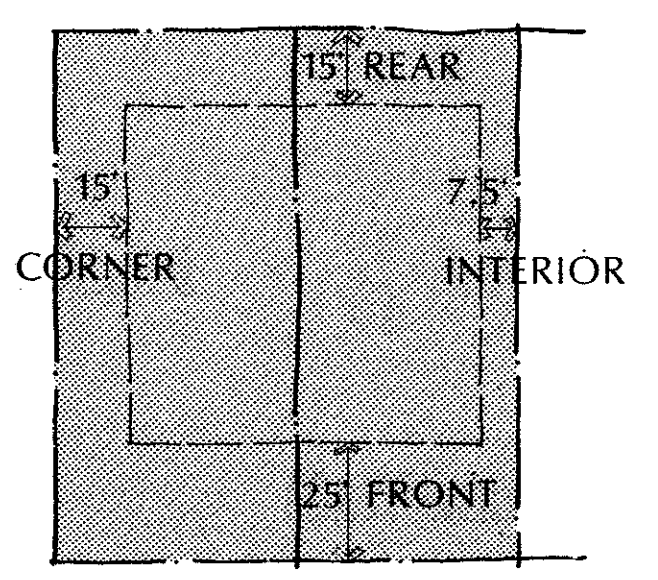
total open space 40.9 ac.
 roads/paved area 9.8 ac.
 recreation facility 2.4 ac.
 building coverage 11.9 ac.
 building height 35' maximum height
 total trees 1535 trees required
 parking 2 spaces/unit, 20 spaces recreation

FOUR UNIT CONDOMINIUM MIN. LOT 45' x 110'

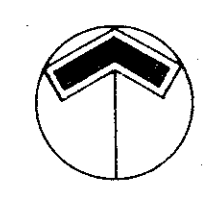


typical building setbacks

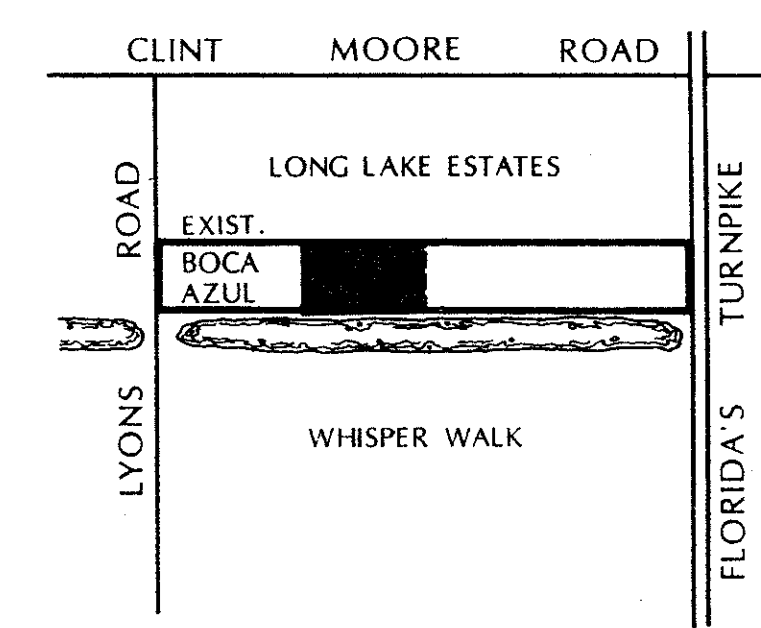
TWO UNIT TOWNHOUSE MIN. LOT 35' & 45' x 110'



scale: 1"=80'



north



project location

ur0220.igr
 BOCA AZUL PH 2,3,4,5 PG 1 OF 2

RECEIVED
 SEP 23 1987
 LAND DEVELOPMENT
 PALM BEACH COUNTY

site plan

boca azul phases two, three, four & five

AN-SCA INVESTMENTS, INC.
 ANGELO SCARDINA (305) 482-6555, (305) 482-6556
 18363 LYONS ROAD BOCA RATON, FLORIDA 33434

STANLEY/WANTMAN, INC.
 ENGINEERS - PLANNERS - SURVEYORS
 WEST PALM BEACH • ORLANDO • FORT MYERS

LOMBARD CENTER 2000 LOMBARD STREET WEST PALM BEACH, FLORIDA 33407 (305) 842-7444